

American Recovery & Reinvestment Act "ARRA" American Made Wireless Network Design Package

Package Offerings From Contributing Corporate Teams



comprehensive network design features.

Planning EDX wireless an Oregon-based software provider since 1985, offers wireless network planning tools that are proven and widely used throughout the world - making it a smart choice for planning today's last-mile networks. EDX tools include advanced propagation models, equipment parameters, OFDM-specific system considerations, in-depth interference studies, demographic analyses, mapping features, and



for a variety of applications including the popular Cellular, iDEN, PCS, CDMA, RFID, WiMAX, 802.11b/a/n/g & LTE Technologies. BVS test equipment now enjoy international markets comprised of 40 countries spread across the Asian, European, Australian, Middle Eastern, Canadian, South American territories.

Equipment Berkeley Varitronics Systems has provided advanced wireless solutions and products to the domestic and international wireless telecommunications industry for over 35 years. BVS has introduced over 50 unique wireless test devices



professional services for the key broadband technologies including WiFi, WiMAX, and LTE.

Training & Professional Services

DoceoTech delivers rapid and comprehensive understanding of technical subject matter, to your company's engineering, product development, strategy, marketing, and general management personnel. DoceoTech provides tailored technical training &



data for their network planning needs.

Data EGS Technologies Corporation was founded in 1996 to provide geodata and consulting services to the mobile telecommunications industry. We have assisted numerous wireless service providers, radio planning tool developers, and infrastructure providers in acquiring and utilizing geographic

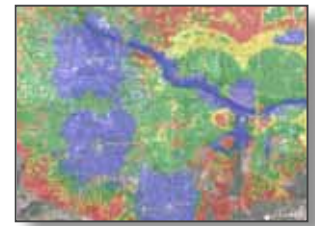
Who Is eligible and who should take advantage of the American Made Rural Broadband Grant?

Municipalities and State Governments
Utility Companies, Telephone and Electric
Rural Telecom Companies
Wireless ISPs

Specific Package Detail s

Planning Tool

- ❑ SignalISE™ Wireless Network Design Planning tool
- ❑ Specialized tool designed specifically for rural broadband wireless projects
- ❑ A single site license included in the package; additional site licenses of the tool can be purchased in addition to the package



Drive Test Equipment

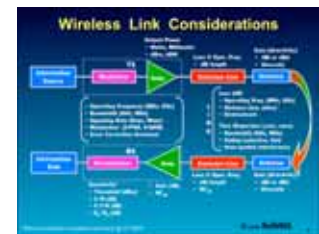
Your choice of one product specific to your technology needs

- ❑ WiMAX, YellowFin Tablet Analyzer
- ❑ WiFi, YellowJacket bang Tablet Analyzer with Swarm Mapping Software
- ❑ CW Drive Study, Gazelle Multiband Scanning Receiver or Tortoise Multiband Transmitter
- ❑ Collected drive study data can be easily imported into planning tool



Training & Professional Services

- ❑ Select from a comprehensive set of certification courses, e-learning opportunities, consultation with subject matter experts and mentoring services, can purchase the others separately if needed; technologies including WiMAX, WiFi and LTE



Data

Four square degrees of supporting GIS data; additional square degrees can be purchased outside of the package. Data types included:

- ❑ A custom 30 meter resolution clutter (land use) layer with classes specifically designed for use in rural broadband network design
- ❑ A 30 meter resolution terrain layer acquired from recently compiled US Government sources
- ❑ Population layer, measured at block group resolution, derived from the US Census Bureau's 2000 census
- ❑ Up to 4, 1 degree by 1 degree dimension tiles, selected at the customer's direction
- ❑ Ready for immediate use within EDX Wireless' software suite

Price Structure

Total Package Price \$37,950

Additional complimentary products and services are available from each vendor outside of integrated package. Payment terms can be established accordingly as per individual customer needs. Package can be ordered from any of the four participating corporate teams. Product specific questions can also be addressed with each corporate team.

Contact Information

Berkeley Varitronics Systems

Scott Schober
Toll Free: 888-737-4BVS
scott@bvsystems.com
www.bvsystems.com

DoceoTech

Robert Lindstrom
785-437-2081
rlindstrom@doceotech.com
www.doceotech.com

EDX Wireless

Jennifer Duncan
541-345-0019
jennifer.duncan@edx.com
www.edx.com

EGS Technologies

Andy Baffes
630-351-2220
abaffes@egstech.com
www.egstech.com